

Household Exiting Supportive Housing (HESH) RGI Priority Update

Toronto Housing and Homelessness Service Planning Forum

June 14, 2023

New Priorities

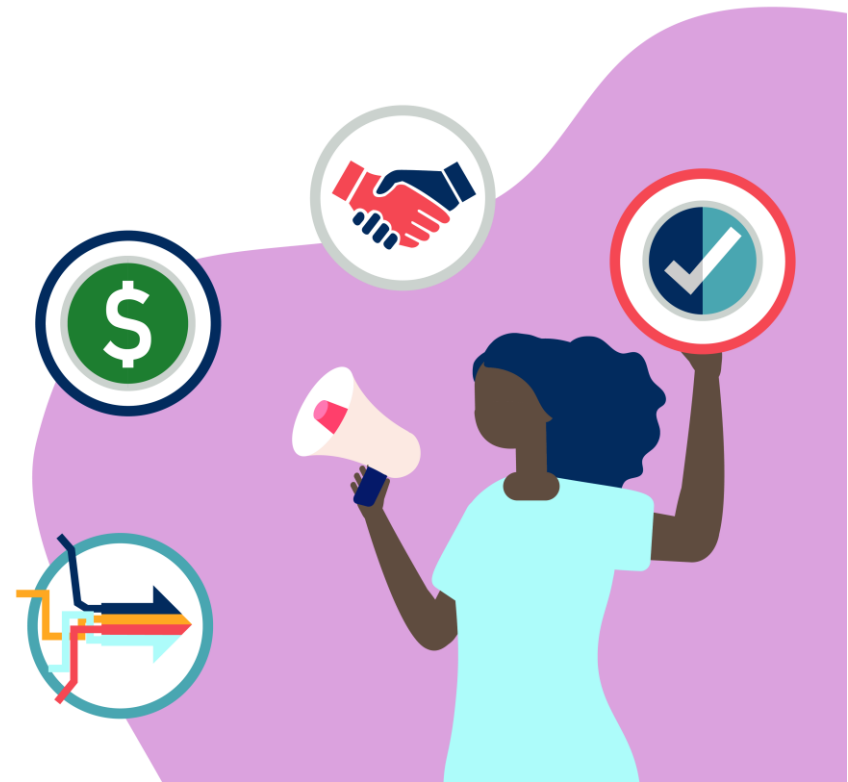
Adopted by Council July 2022 - <http://app.toronto.ca/tmmis/viewAgendaItemHistory.do?item=2022.PH35.20>

City Council amend the local priority rules as part of the Service Manager's system under the Housing Services Act, 2011 for selecting households from those waiting for rent-geared-to-income assistance such that the following will apply effective **July 1, 2023**, ranked in the following order of priority:

- a. over-housed households;
- b. terminally ill;
- c. tenants living in an rent-geared-to-income unit administered by the City as Service Manager receiving housing supports that are now capable of living independent of the support services; **[new]**
- d. applicants experiencing homelessness, including homeless newcomers, where every fifth rent-geared-to-income vacancy is filled by a household experiencing homelessness; **[change from 1 in 7 to 1 in 5 and filled via coordinated access]**
- e. youth, who are 16 or 17 years old at the time of applying for rent-geared-to-income, applying independent of an adult, where every seventh rent-geared-to-income vacancy is filled with a youth household; and
- f. Indigenous peoples, where every tenth rent-geared-to-income vacancy is filled by an Indigenous household. **[new]**

Engagement

- Toronto Housing & Homelessness Service Planning Forum
- Targeted discussions with supportive housing providers
- Housing Secretariat: Coordinated Access, Grants, Housing Consultants
- Ottawa Housing Registry



City of Ottawa – Supportive Housing Graduate Priority

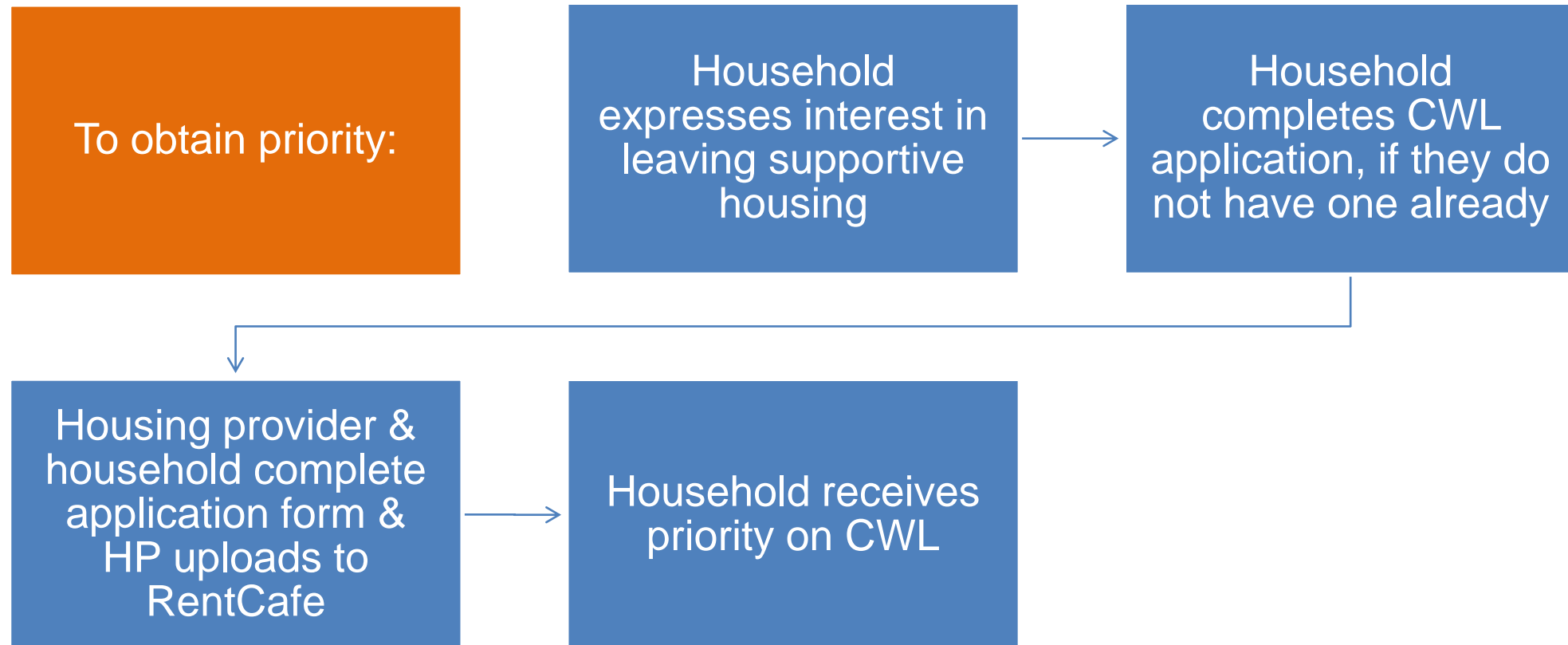
- Must be household initiated (the household must be ready and willing to move)
- Requires a form to be completed from the housing provider indicating the households interest to move, with the households consent
- Housing provider and household complete an application to apply to the waitlist with this priority
- Since 2016, 79 households have been housed with this priority (11 households/year)
- Out of the 12,000 households currently on the City of Ottawa's waitlist, there are 38 households with this priority (0.3%)
- There have been no cases in which a household has moved to a unit and has requested a unit with supports a few years later

Eligible Providers – Proposed Criteria

Proposed Eligibility Criteria for Housing Providers in Toronto:

1. The housing provider must be administering RGI
2. The housing provider has an approved Access Plan
3. The housing provider is providing permanent housing
4. The supports provided in the building must be attached to the entire building
(by the provider or by an agency)

Proposed Process to Apply for Priority

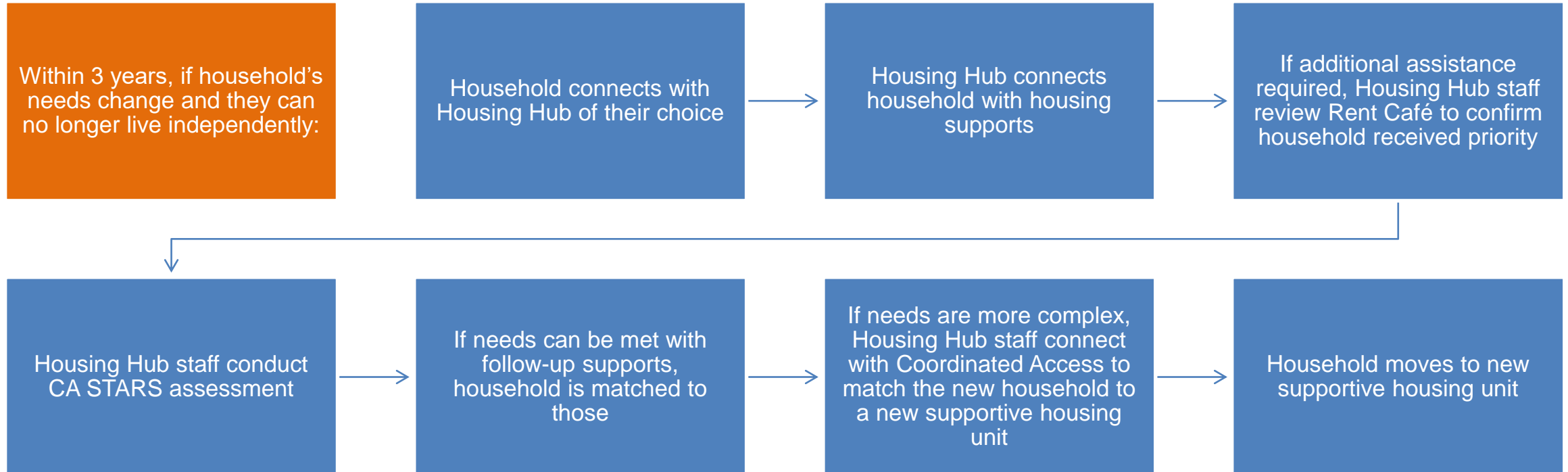


Pathway Back to Supportive Housing

- Engagement with housing providers & best practice research indicated an interest in providing a pathway back to supportive housing, should a household's needs change and they can no longer live independently
- Homelessness prevention/diversion within 3 years of obtaining priority + moving
- Opportunity in partnership with Housing Hubs (formerly Housing Help Centres) and Coordinated Access



Proposed Process Back to Supportive Housing



Next Steps

June 14, 2023
THHSPF

June 15-30, 2023

- Leadership approvals
- Update RGI Manual
- Finalize forms
- Training
- Communications (with other RGI changes)

July 1, 2023
Priority effective

Questions