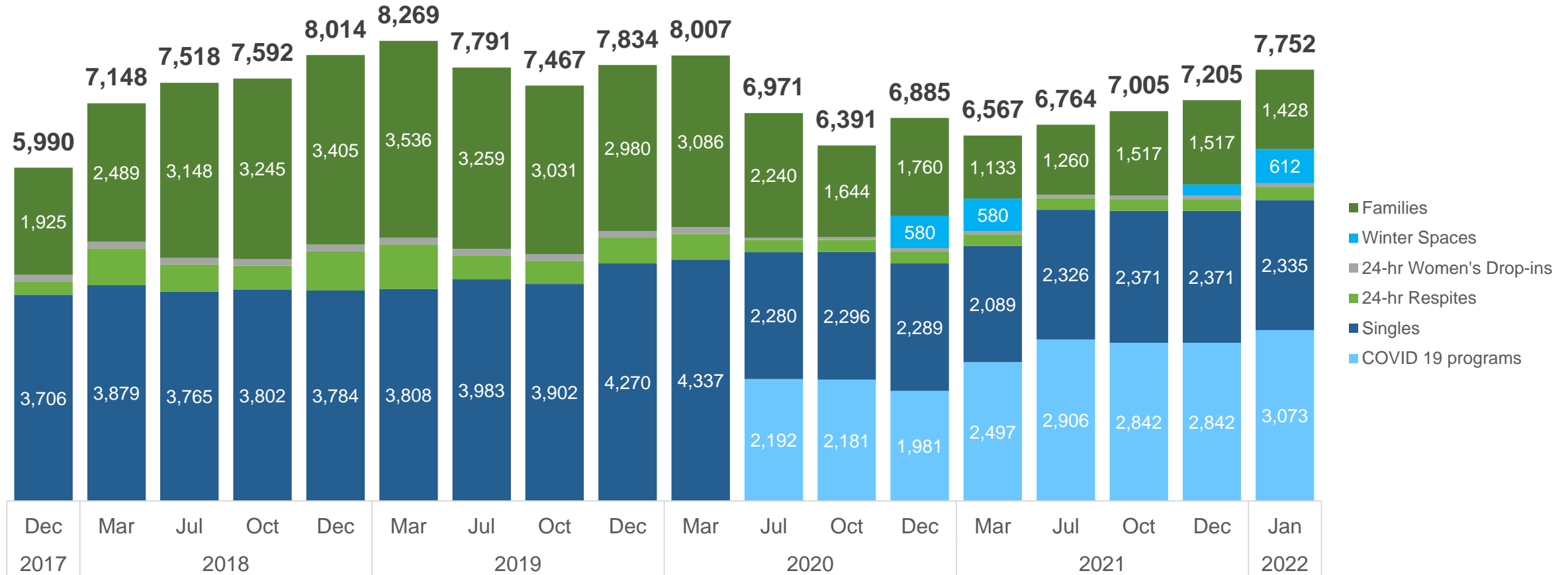


SSHA Update and Shelter System Flow Highlights

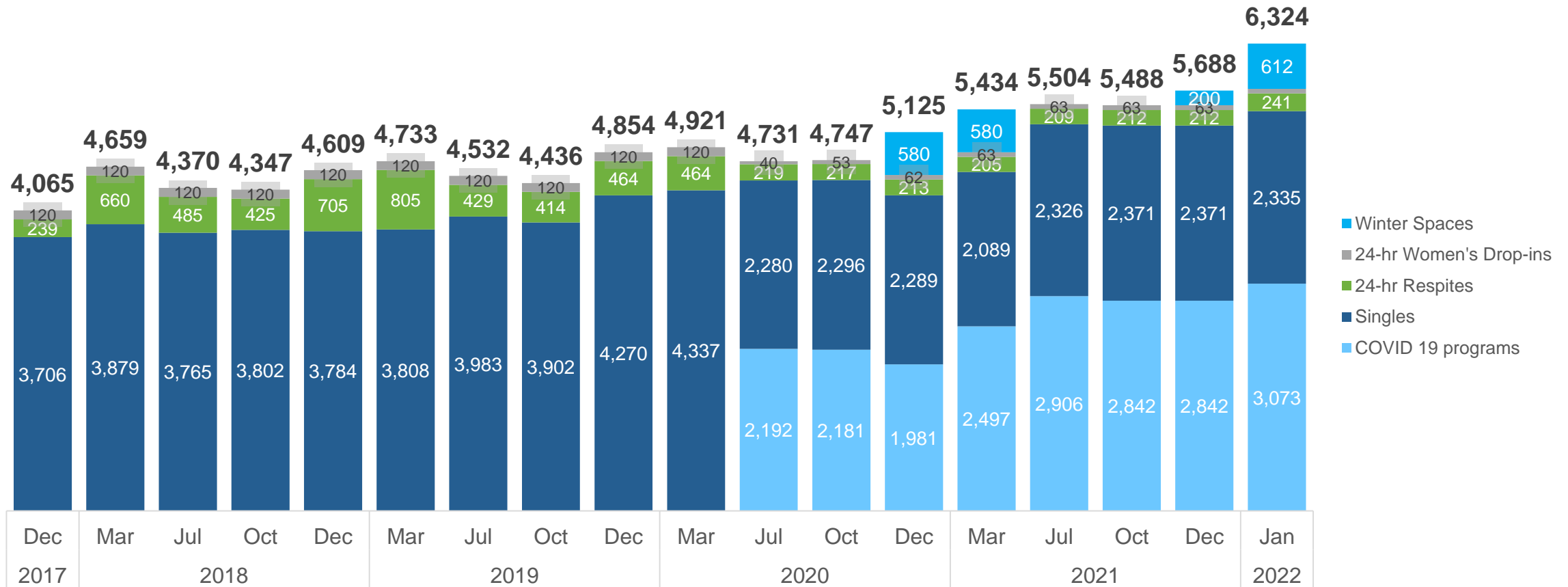
February 09, 2022



Total shelter system capacity

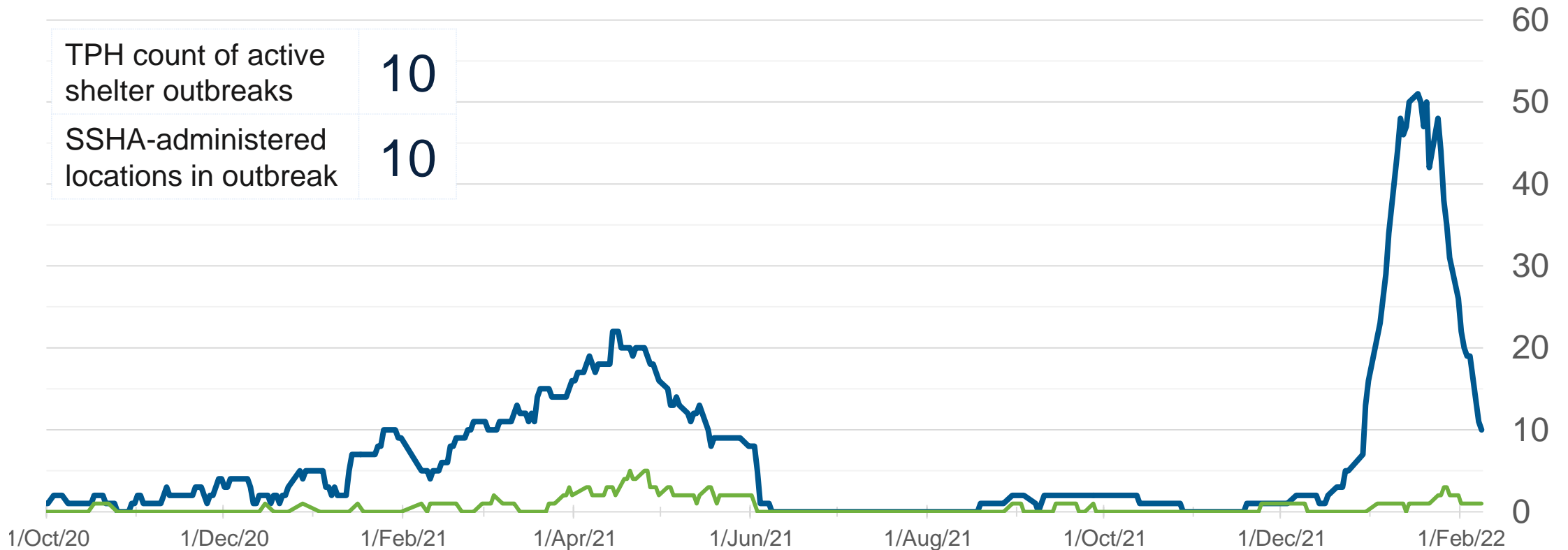


Singles sector programs capacity



Active outbreaks (shelters) & active hospitalizations (shelter cases)

— Active Outbreaks (Shelters) — Current Hospitalizations (Shelters)



TPH count of active shelter outbreaks	10
SSHA-administered locations in outbreak	10



Shelter System Flow

Shelter System Flow Data

- Measure progress towards achieving the vision of homelessness being rare, brief and non-recurring
- Provide a more comprehensive picture of the shelter system, rather than focusing exclusively on nightly occupancy and capacity
- Provide a better understanding of who is experiencing homelessness and how people are entering and exiting the system

Who is included?

- People experiencing homelessness in the shelter system in the last three months, pulled from the Shelter Management Information System
- Work is underway to include people who are exclusively sleeping outdoors, as well as adding information about racial identity and veteran status
- With time, this data will become a comprehensive snapshot of all people experiencing homelessness.
- We know peoples experiences of homelessness are fluid, and they may move between different types of accommodation, including sleeping outdoors, staying with friends and family, being incarcerated or in a health facility, or other temporary accommodation.
- Although they are included in the count of those who are ‘actively’ homeless, they may not be in need of shelter on any given night.

6 key data points

1. **Actively experiencing homelessness** - who have used the shelter system in the last three months.

Inflow

2. Newly Identified
3. Returned from Permanent Housing
4. Returned to the shelter system

Outflow

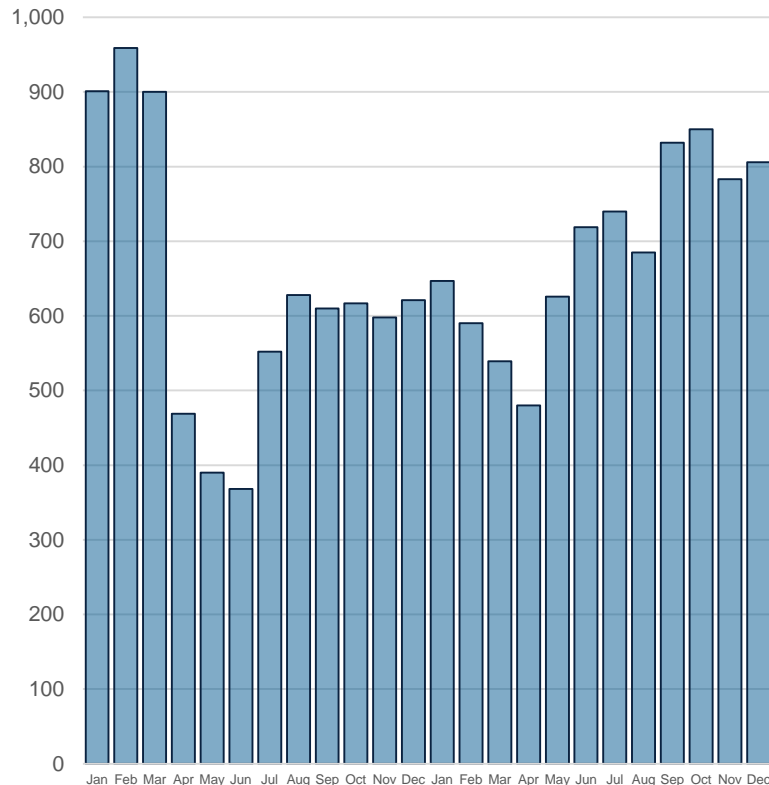
5. Moved to permanent housing
6. No recent shelter use

RARE

People are provided housing-focussed supports that ensure homelessness is **rare**, brief and non-recurring

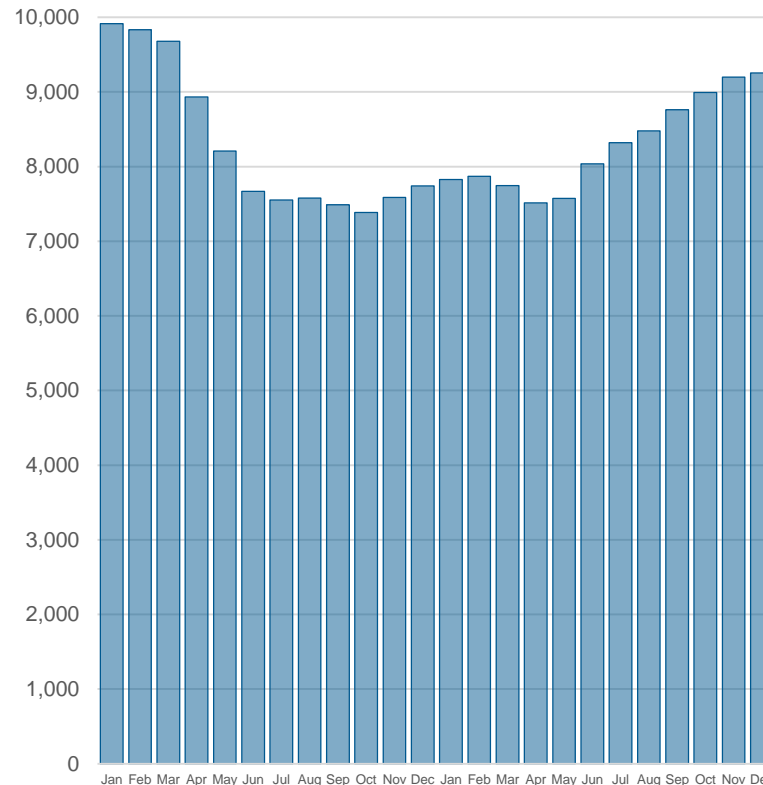
People newly identified as homeless

This month	Avg 3 last months	Same month last year	Annual Trend
806	813	621	+185



People actively homeless (in shelters)

This month	Avg 3 last months	Same month last year	Annual Trend
9,255	9,149	7,741	+1,514

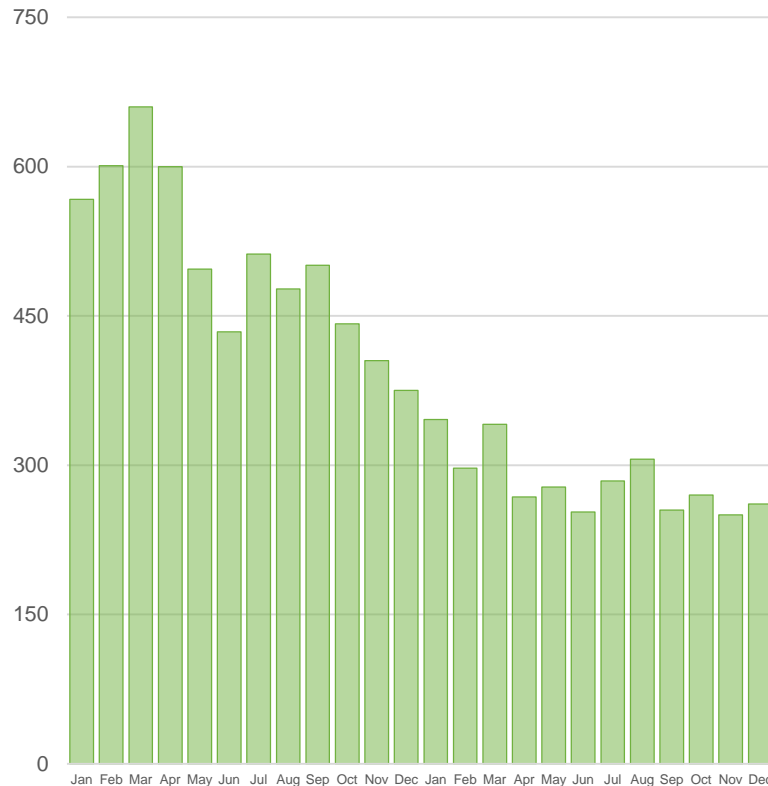


BRIEF

People are provided housing-focussed supports that ensure homelessness is rare, **brief** and non-recurring

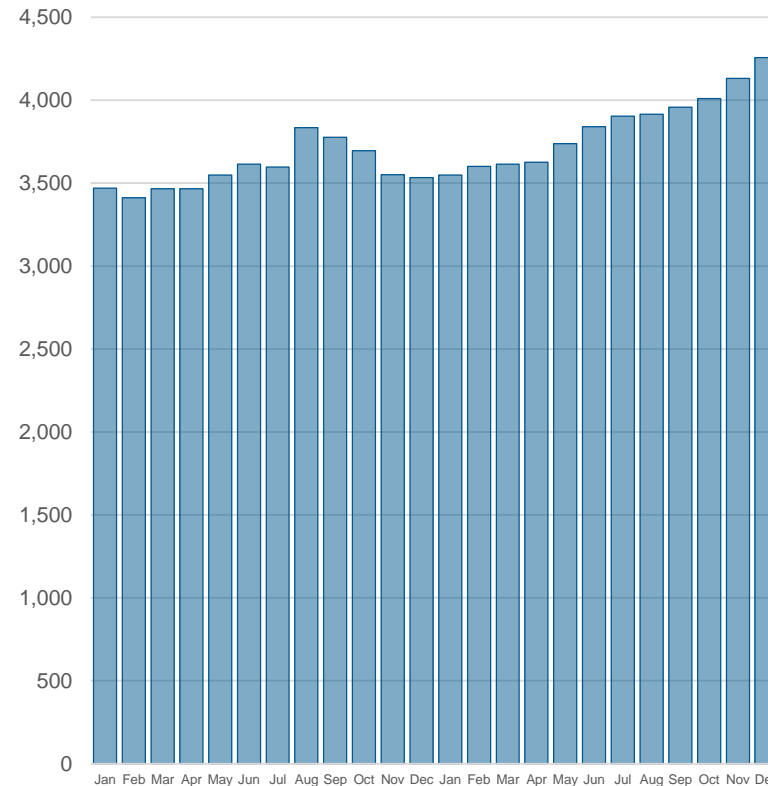
People moved to permanent housing

This month	Avg 3 last months	Same month last year	Annual Trend
261	260	375	-114



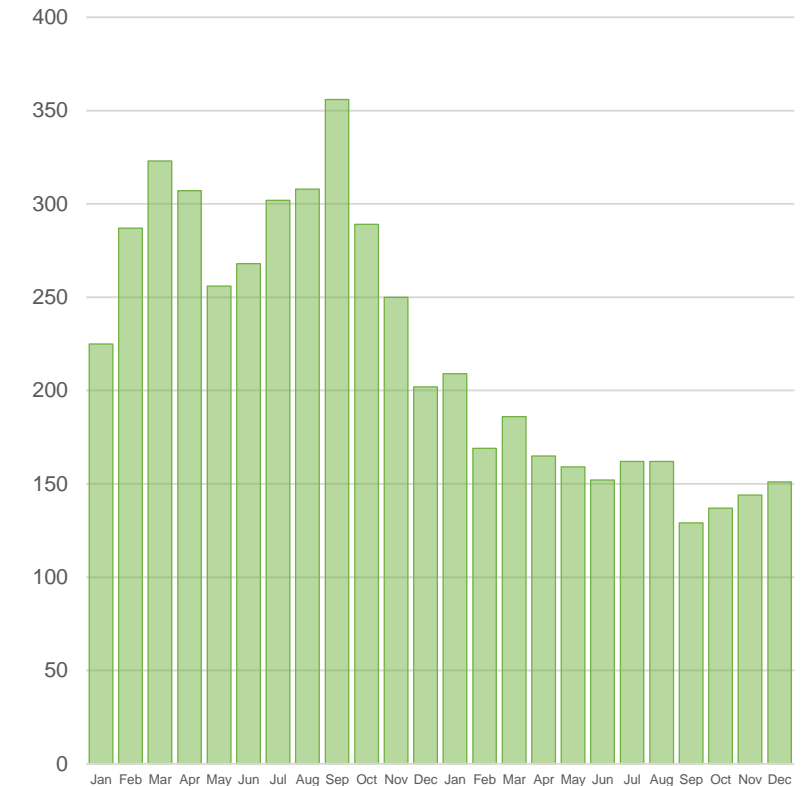
People experiencing chronic homelessness

This month	Avg 3 last months	Same month last year	Annual Trend
4,258	4,133	3,533	+725



People experiencing chronic homelessness moved to permanent housing

This month	Avg 3 last months	Same month last year	Annual Trend
151	144	202	-51

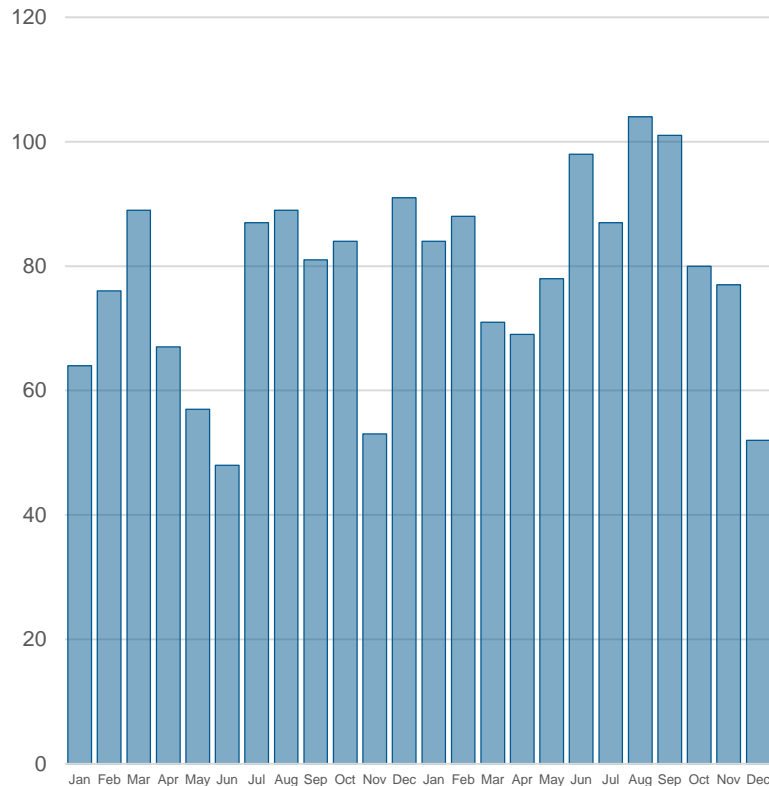


NON-RECURRING

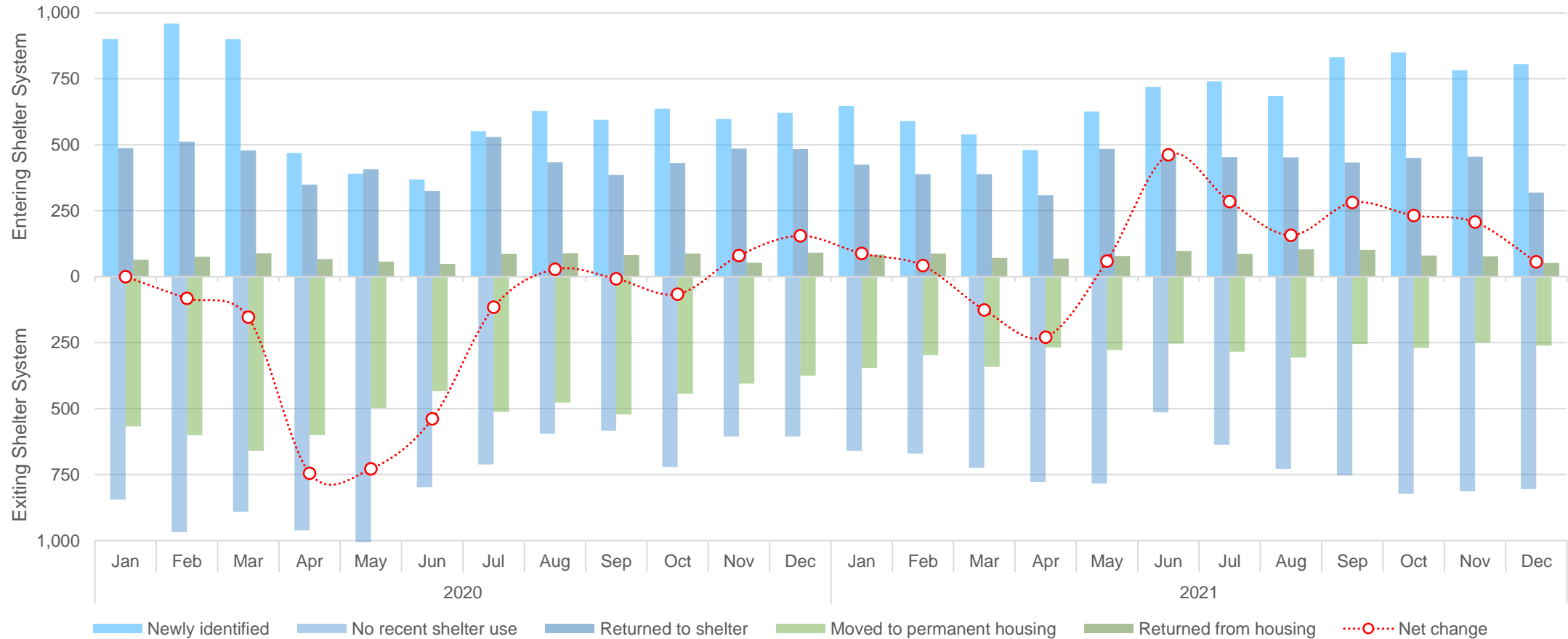
People are provided housing-focussed supports that ensure homelessness is rare, brief and **non-recurring**

Returns from permanent housing

This month	Avg 3 last months	Same month last year	Annual Trend
52	70	91	-39



Shelter system flow data, Detailed components and net change





Shelter System Flow Recent Highlights



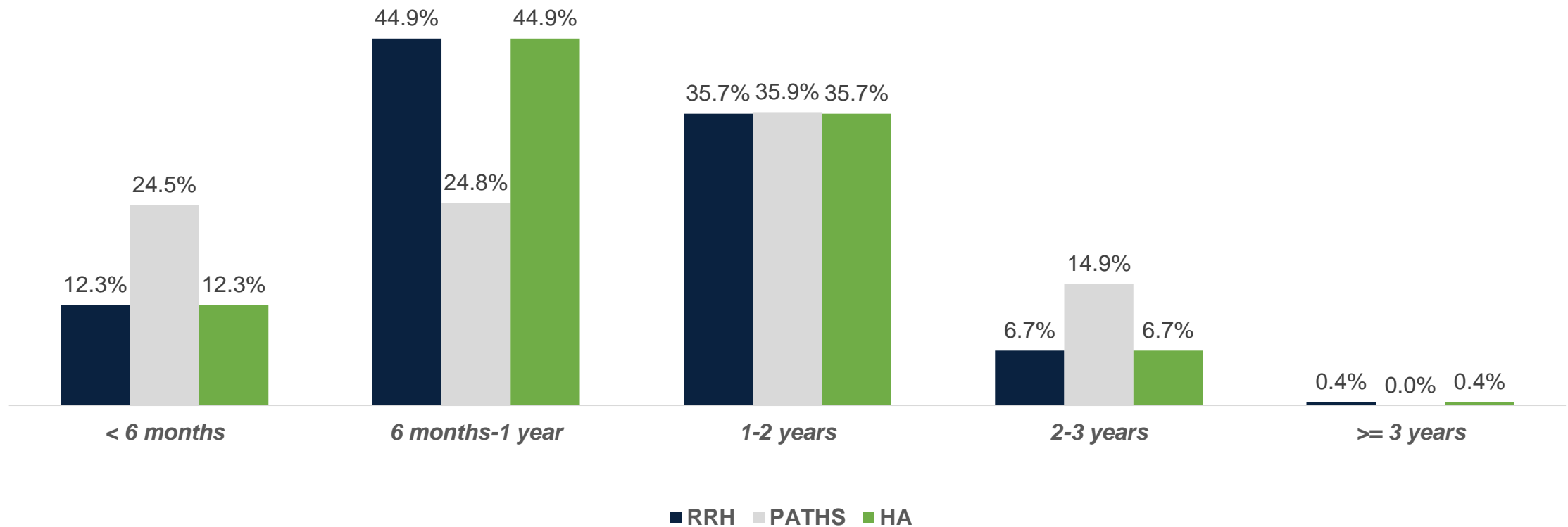
2021 Housing Outcomes by Program

2021 housing outcomes by program (individuals)

Rapid Rehousing Initiative	PATHS	Housing Allowances	Total
TCHC units, low/mod supports, prioritization-based	Supportive housing, low/mod/high support, prioritization-based	Subsidy in private market unit, referral-based	
512	499	877	1,888

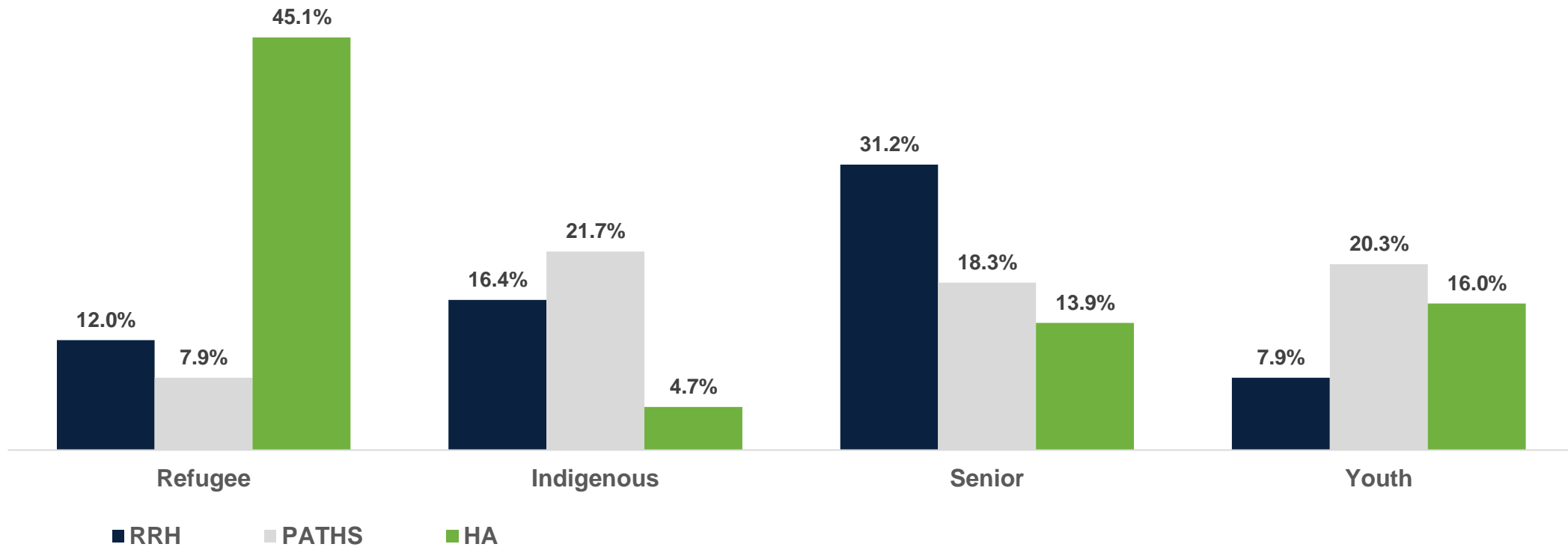
2021 Coordinated Access Housing Outcomes

Length of homelessness based on SMIS bed night count

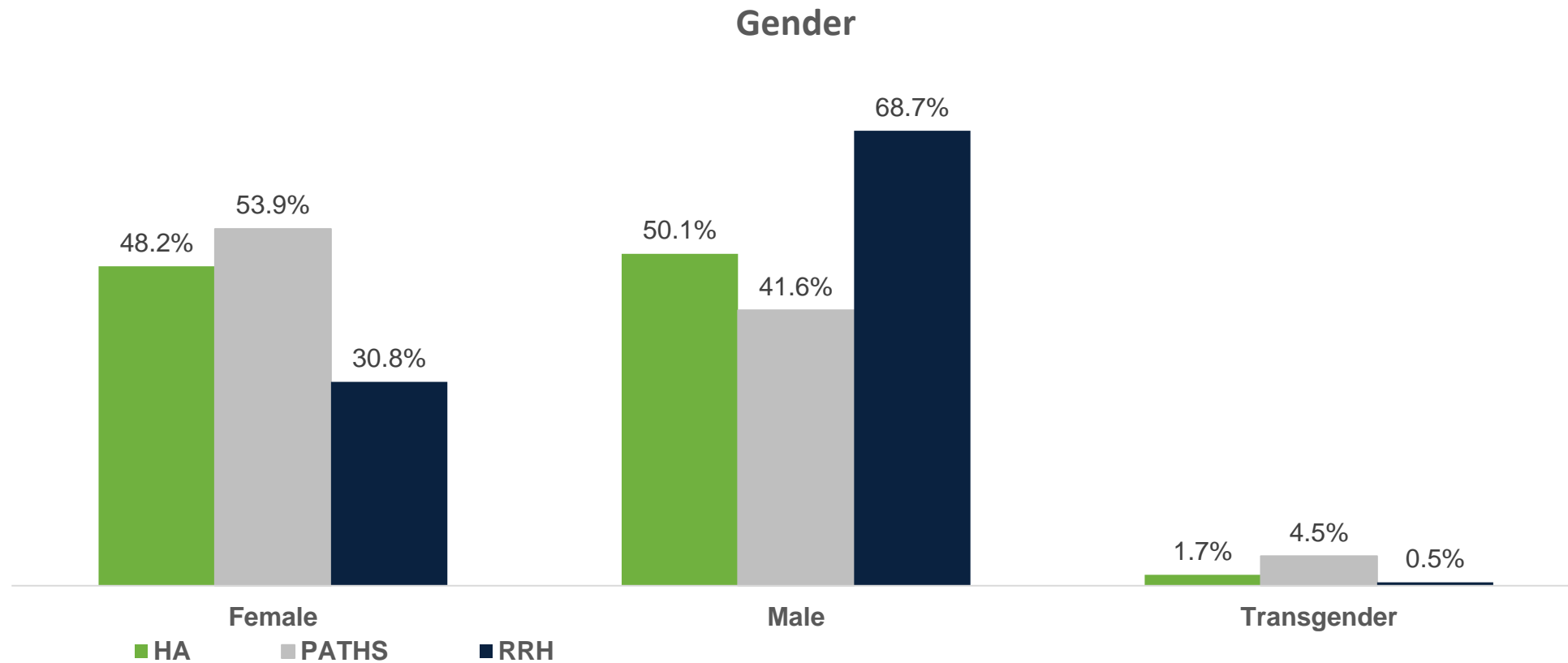


2021 Coordinated Access Housing Outcomes

Demographic profile

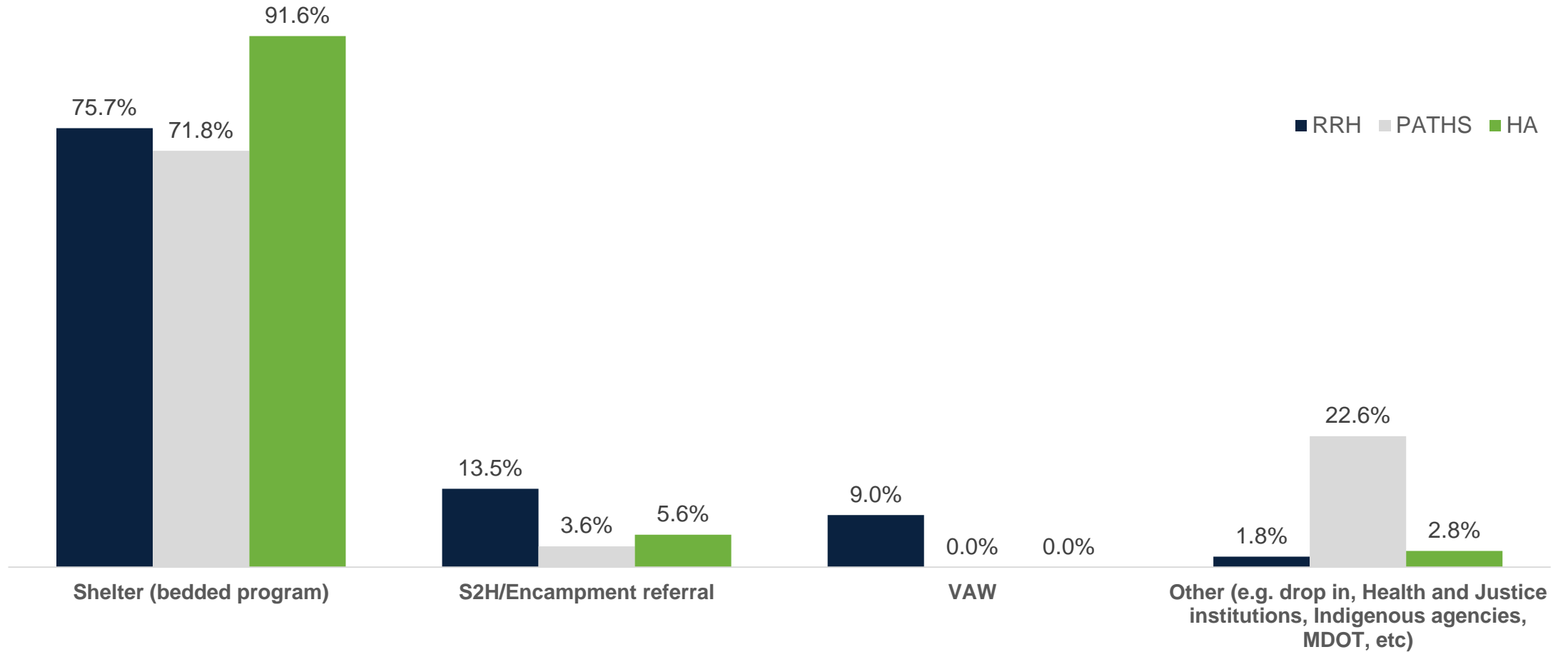


2021 Coordinated Access Housing Outcomes



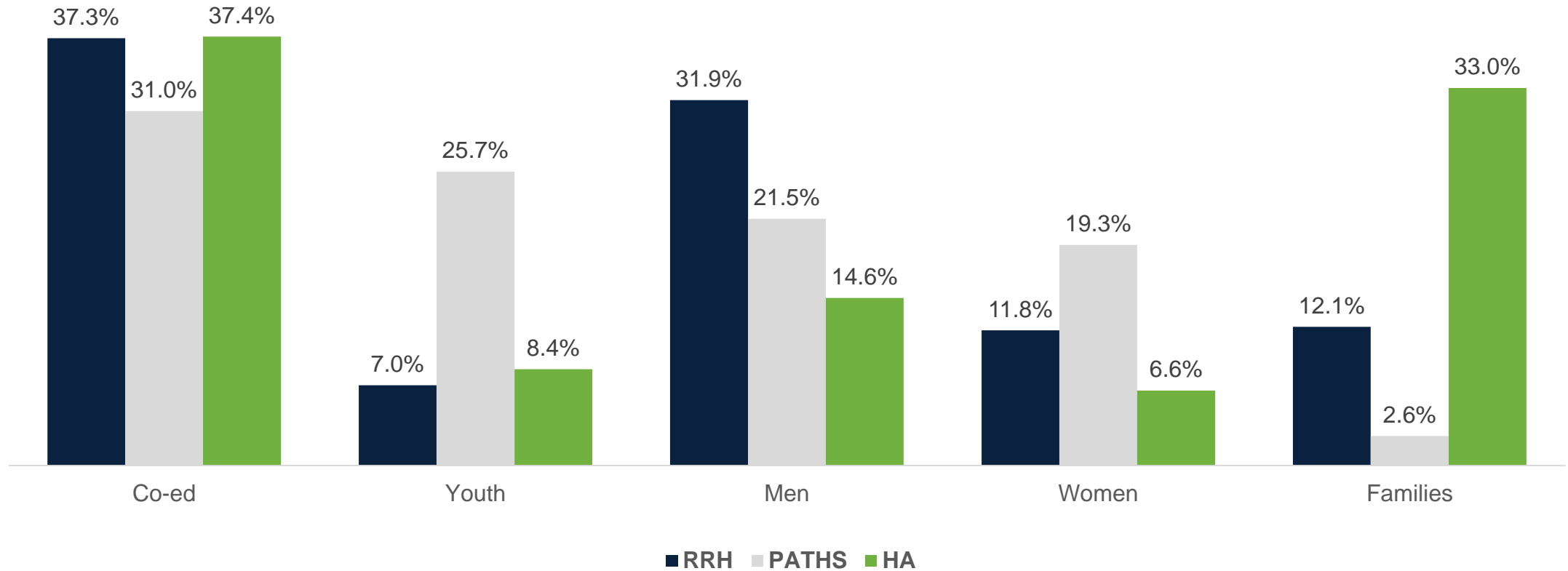
2021 Coordinated Access Housing Outcomes

Referral service points: RRH, PATHS and HA



2021 Coordinated Access Housing Outcomes

Sector breakdown for referrals from shelter bedded program



Questions?

