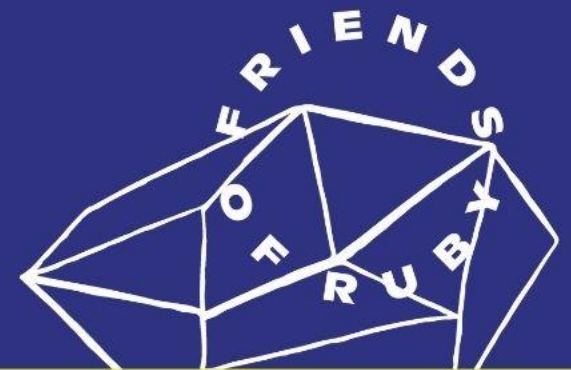
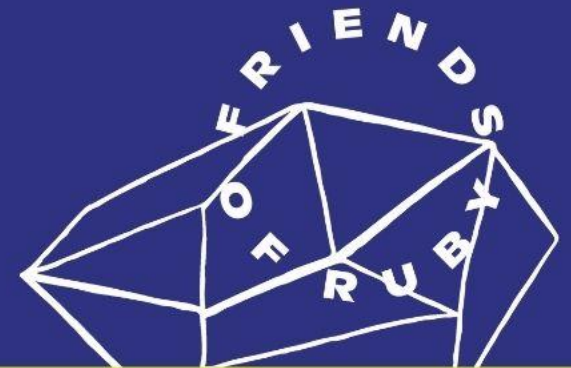


*Empowering
Connections:
An Innovative Care Model*



Friends of Ruby

*We provide a welcoming space for
2SLGBTQIA+ youth*



Friends of Ruby

Toronto Alliance to End Homelessness

Speakers



Alban Joxhe (he/him)

Director of Transitional Housing



The Current Landscape

35%
of youth
experiencing
homelessness
identify as
2SLGBTQIA+

2SLGBTQIA+ youth
face family
rejection, emotional
and financial
instability, & are at
high risk of poverty
violence,
homelessness, and
suicide

Unique barriers
exist for queer and
trans youth
accessing the
shelter system due
to homophobia,
transphobia, and
biphobia.

Trans, Indigenous,
racialized and
newcomer youth
are **the most**
vulnerable to
discrimination and
its negative effects

2SLGBTQIA+ youth
are more likely to
attempt suicide and
engage in
substance use

Friends of Ruby is dedicated to shifting these realities.

Our Values



People-focused

We value the dignity, strengths, and contributions of all individuals



Collaboration

We work together and foster strong and trusting relationships with our community partners, youth, staff, contractors, and volunteers



Respect

We are validating, respectful and welcoming, and exercise diversity, inclusion, and equity through our interactions and practices



Accountability & Transparency

We strive to build and sustain trust with our partners, operate with integrity and sustainability with the highest possible ethical standards



Continuous learning

We promote a culture of adaptability, embrace change and opportunity, encourage and motivate development, and always seek to improve

Our Philosophy

The youth we serve

come from unique and diverse backgrounds. Friends of Ruby offers support that comes from a comprehensive framework in an effort to meet their needs.

Friends of Ruby follows

a state of the art approach that supports youth: trauma-informed, anti-oppressive, anti-racist, strength-based, youth-centric, harm-reduction, and sex-positive.

3 PILLARS OF SUPPORTS AND SERVICES

01

YOUTH DROP-IN CENTRE

02

COUNSELLING AND MENTAL HEALTH SERVICES

03

TRANSITIONAL HOUSING

Youth Drop-In and Programming

At the Friends of Ruby Drop-In Centre,

youth are provided a space to access essential supports and community. Youth work with case workers that bring specific skillsets to help them navigate their varying journeys.

Youth are also provided essential programming:

- **Employment and Education Talks (E Talk)**
- **BIPOC Wednesdays**
- **Grocery Fridays**
- **Movie Night, etc.**

THE FRIENDS OF RUBY DROP-IN PROVIDES



Meals, snacks,
light groceries



Computer lab
with WiFi and
printer access



Counselling



Personal
hygiene kits



TV with content
streaming



Phone
services



Harm
reduction kits



Book
Library



Community
resources



TTC
tokens



Lounging
area



Daily
programming

Counselling Services

Our counsellors provide individual one-on-one counselling and therapeutic group programs. Counsellors take an integrative approach using several evidence-based therapies to help 2SLGBTQIA+ youth reach their goals.

Youth are looking for support with these concerns:

- **Anxiety**
- **Depression**
- **Trauma**
- **Relationship issues**

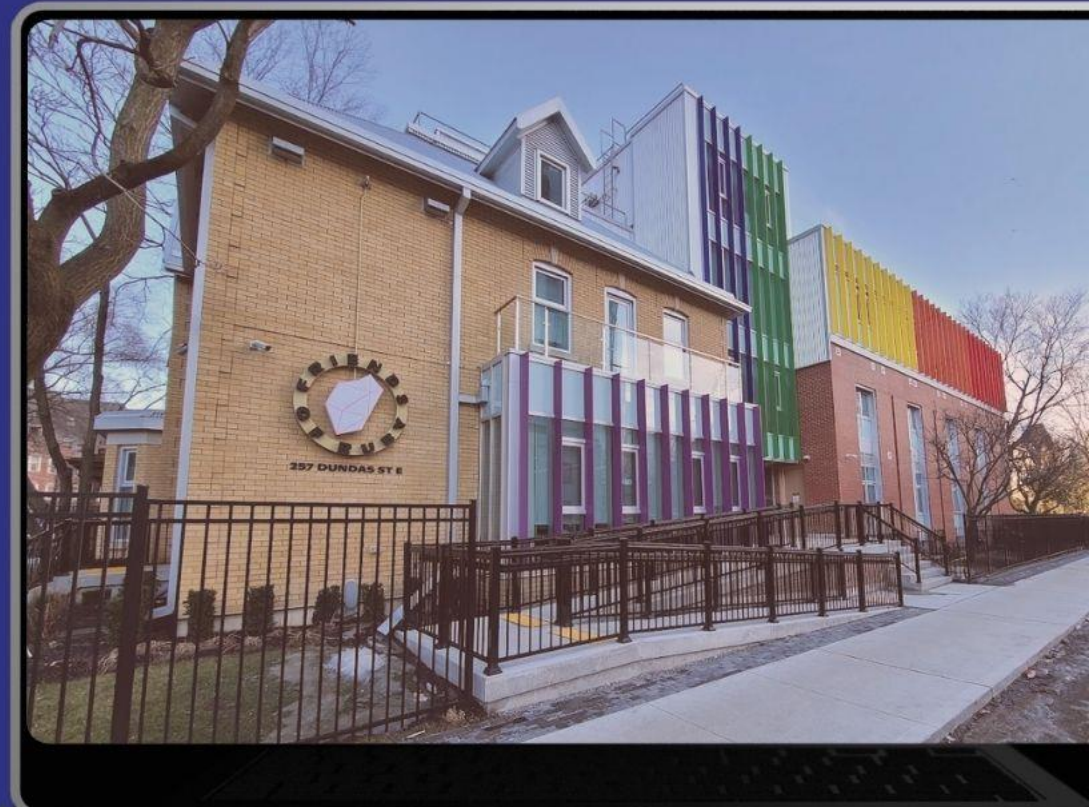


Therapeutic groups include:

- **Trans Voice Groups**
- **Skills for Safer Living**
- **Mindfulness Skills for Coping with Stress**
- **Dialectical Behavioural Therapy**
- **Befriending Yourself, Trans Support**

Transitional Home

The Home is Canada's first custom built transitional home for 2SLGBTQIA+ young people. It is designed in consultation with the community, integrating mental health and social service wrap-around supports.



Transitional Home



1 in 3

2SLGBTQIA+ youth make up the homeless youth population

2SLGBTQIA+ youth experience disproportionately high rates of depression, anxiety, fear, violence, harassment, and substance use

Shelters and transitional homes are traditionally organized by binary-gender distinctions, which make them unwelcoming and often unsafe for queer and trans youth.

Friends of Ruby

Toronto Alliance to End Homelessness

Transitional Home

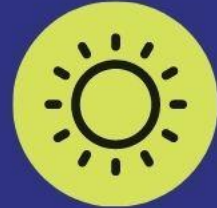
Designed **for** 2SLGBTQIA+ youth,
with 2SLGBTQIA+ youth.



More than just a roof over one's head



Accessible, pet-friendly, single and double occupancy suites, with private bathroom and shower



Individual thermostats and windows that open to the outdoors



Fireplace, rooftop garden, floor to ceiling windows, and state-of-the-art communal kitchen



Life skills workshops, in-house programming, and community connections

The Home is a community of 31 units to support specific youth needs.

It pairs wrap-around services with stable housing through:

- **mental health**
- **financial literacy**
- **physical health**
- **housing stability**
- **education and employment**
- **community and essential supports**



**Thank you for being a
friend.**

Alban Joxhe (he/him)

Director of Transitional Housing

