



# Homelessness & Seniors – Filling the Gap

June 2022

# LOFT

## VISION

Together, we can all live successfully in our community.

## MISSION

To help people achieve their optimal health and well-being in the community, LOFT offers unwavering support and hope.

## VALUES

Compassion, Collaboration and Community delivered with Dignity, Innovation and Excellence

## BY THE NUMBERS\*



702

Staff



461,000

Supportive Interactions with Clients



9,500

Served (from youth to seniors)



1,733

Housing Units



679

Clients transitioned from hospitals to the community or long-term care

### Supportive Housing

Affordable supportive housing tailored to clients' needs.

### Specialized Services

Innovative programs support clients living with HIV/AIDS, members of the LGBT2SQ community, and those experiencing dementia-related behaviours. Excellence in successfully transitioning individuals facing homelessness from hospital to the community.



### Community Support Services

Assistance with daily activities, health care system navigation and crisis management for clients living in their own home.

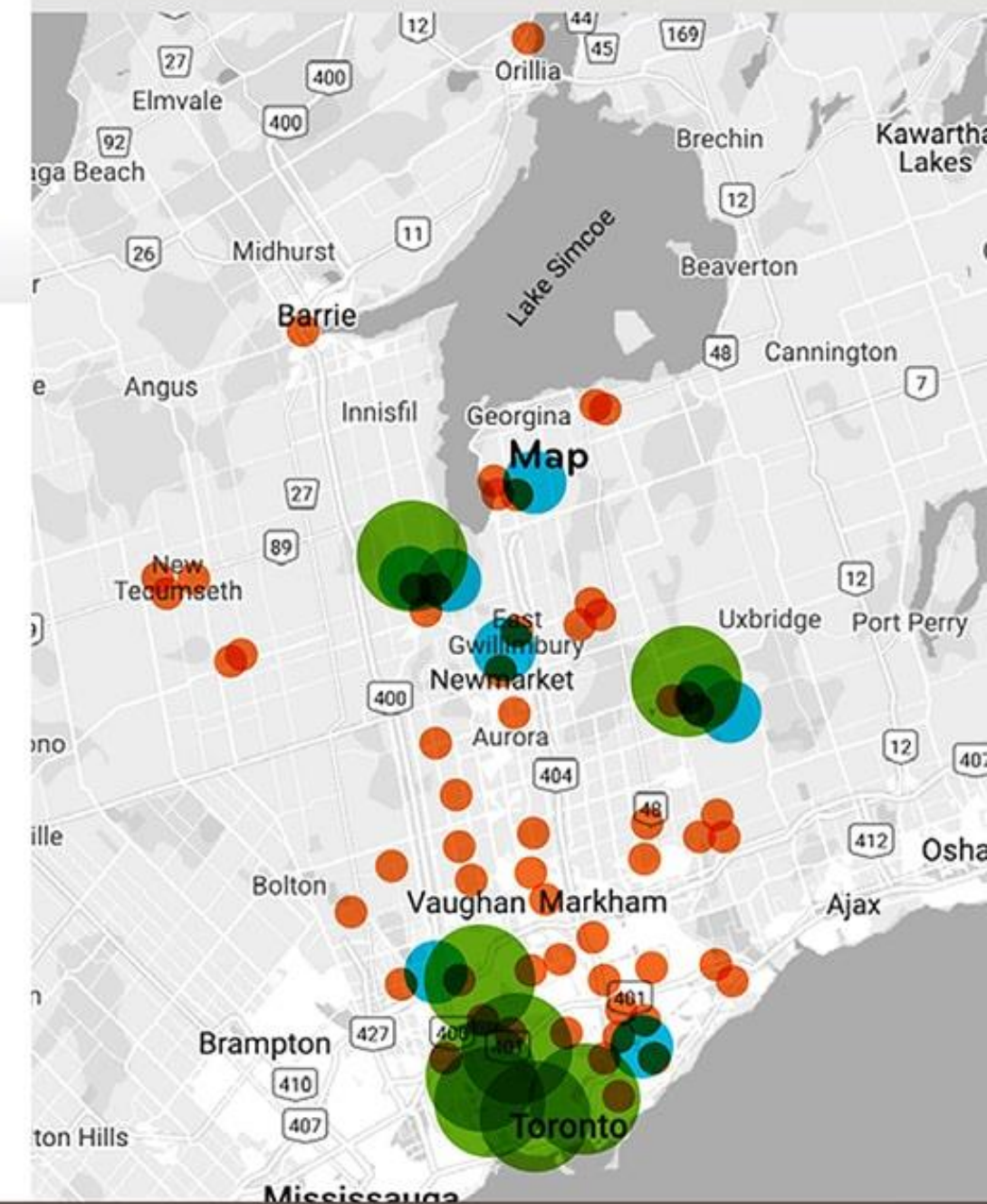
### Leading Complex Mental Health Support

Training and education, with a focus on mental health and addiction, to long-term care homes, community agencies and hospitals. Expertise and support to organizations assisting people with dementia and other cognitive challenges.

## HOUSING AND SERVICE HUB LOCATIONS

Number of housing sites and service hubs by numbers served

61-100+ 31-60 5-30



## FINANCIAL POSITION\*

### Total Revenue

\$55.3 MILLION

### Operating Expenses



- 74% - Salaries & benefits
- 21% - Operating costs
- 5% - Administration

### Sources



- 85% - Government funding
- 6% - Municipal
- 66% - Ontario Health
- 13% - Other
- 11% - Client contributions
- 4% - Charitable donations

\* Data from Fiscal Year 2020-21.

## Seniors Services

LOFT Seniors Services has been a leader for more than 30 years, providing specialized, community-based housing and support services to vulnerable and at-risk seniors with complex challenges including mental or physical health issues, addictions, behavioural challenges, dementia, absence of family support, social isolation, cultural dislocation and poverty.



## Type of Seniors Services Offered at LOFT

- Specialized Assisted Living Services
- ALC Transitional Housing & Support
- Specialized PSW Services
- Seniors Crisis Services
- Psychogeriatric Case Management
- Behavioural Supports



# LOFT Specialized Seniors Services

LOFT offers a range of integrated services to support 2400+ seniors annually living with social determinants of health, addictions, cognitive, serious mental health and physical health challenges.



Holistic services focusing on Complexity in seniors care including:

- Social determinants of health
- Landlord/tenant considerations
- Mental health
- Addiction (Harm reduction/client led recovery)
- Chronic health concerns
- Dementia
- Integrated behavioural supports



## LOFT Community Services

- Working towards an integrated health and social service system
- Health/social service System navigation with population that has histories of being stigmatized
- Right place of care and transitions( Ed diversion/avoiding eviction/discharge to shelter/ LTC )
- ALC transitions- lessons learned and gaps identified

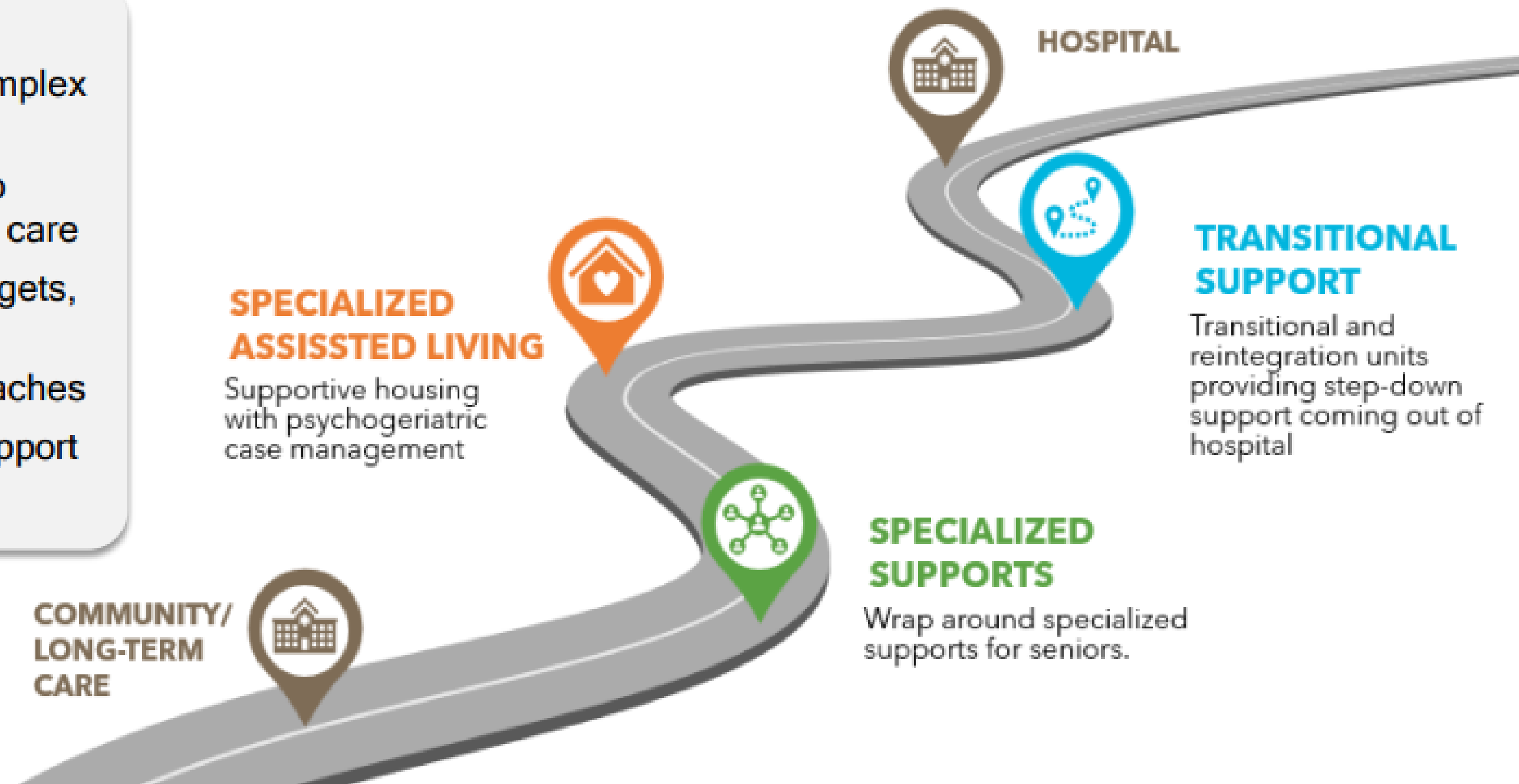


## Leader in ALC Transitions

*As a leader in ALC transitions, LOFT understands the critical need to support clients in finding a home to live safely with dignity in the community.*

### Achieving this includes:

- Deep understanding of complex clients
- Building on relationships to breed a higher standard of care
- Moving away from rigid targets, timelines and processes
- Tailored efforts and approaches
- Innovative and creative support based on client needs





## The PATH Home



*Kenney was ALC for 1 year in an acute care hospital*

### Service Description

- Short-term transitional Specialized Assisted living support for older adults or seniors designated Alternative Level of Care (ALC)
- Specialize in supporting vulnerable older adults with complex physical health challenges, mental health challenges, addiction or cognitive impairment
- 24/7 Specialized Assisted Living/Supportive Housing Services
- Dietary Services
- Life Enrichment Services
- Psychogeriatric Case Management - care coordination, crisis intervention, system navigation and client advocacy to support individuals to transition to their permanent home

# St. Anne's Place offers a home for retirees with complex health issues – and often nowhere else to go

"The first thing we say to people is you have come to the right place and sadly most people don't often hear that," says LOFT Community Services CEO.

By **Emily Mathieu** Affordable Housing Reporter  
Tue., June 11, 2019 | 5 min. read

[READ THE CONVERSATION](#)



# Thank You



**Lindor Uygur**  
Director West Toronto Seniors Services  
[luygur@loftcs.org](mailto:luygur@loftcs.org)

**Debra Walko**  
Senior Director Complex Care & Seniors Services  
[dwalko@loftcs.org](mailto:dwalko@loftcs.org)