

**SUPPORTIVE
HOUSING
IN TORONTO**



**Creating New Affordable and Supportive
Homes at 65 Dundas St. E.**

It takes a community to ensure everyone in Toronto has a safe, affordable place to call home



Supporting the Downtown East 5-Year Action Plan

- Consultation in the development of the Downtown East Action Plan has identified the need for more permanent supportive and affordable housing opportunities.
- The Plan called for action to increase housing outcomes and address the housing gaps that contribute to homelessness, particularly through supportive housing.
- The City's plans for 65 Dundas St. E. support continued progress of the Downtown East Action Plan, growing the supply of affordable and supportive homes to help more vulnerable residents achieve stability.

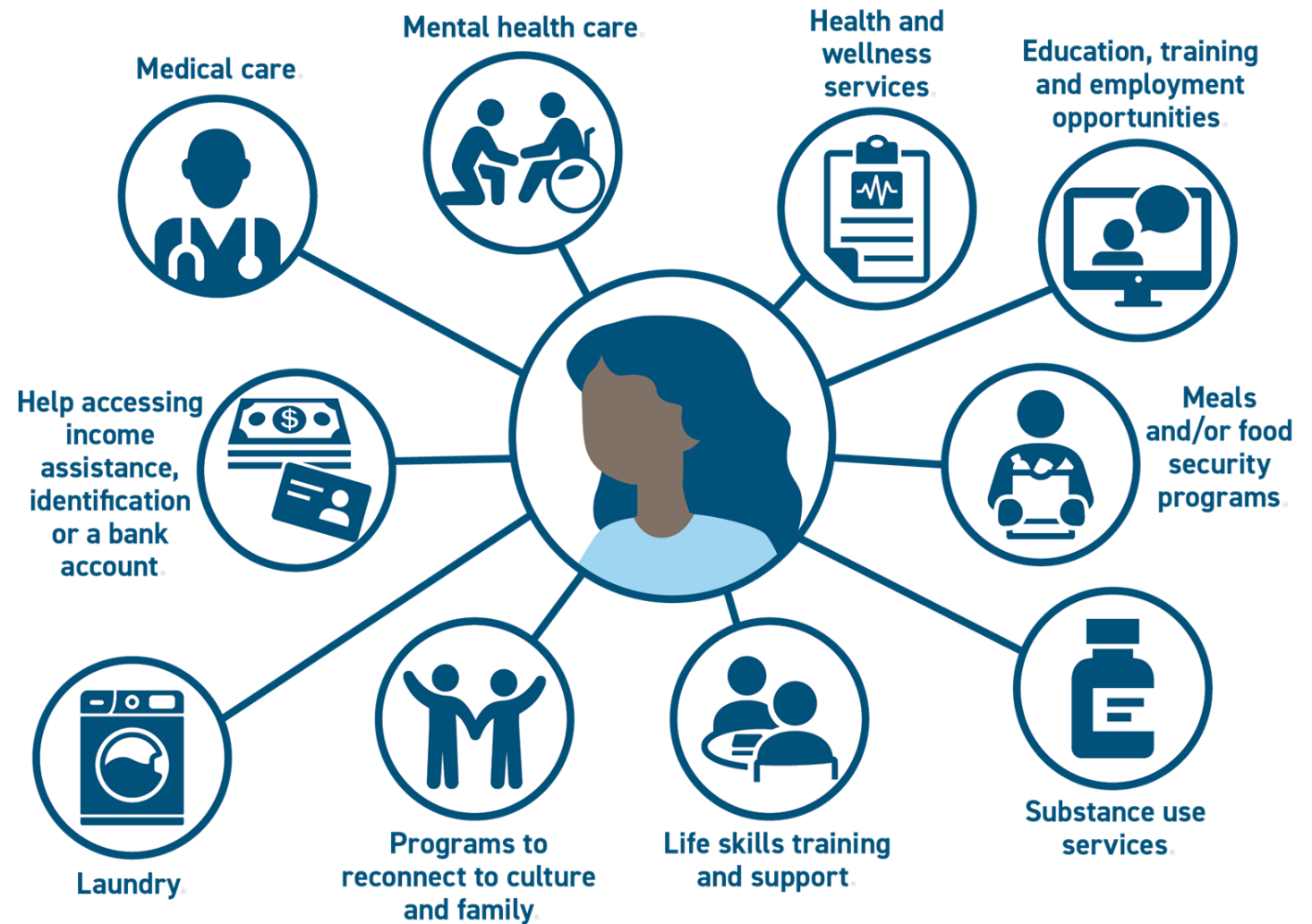
Creating affordable homes for people in need at 65 Dundas St. E.

The existing building will be renovated to offer:

- Homes for a range of incomes, including some deeply affordable homes with supports
- Studio and one-bedroom apartments with a private bathroom and kitchenette
- At least 15% of the apartments will be accessible
- Amenities such as shared laundry area, a dining area, communal space, and multiple programming and tenant support spaces

What is supportive housing?

Supportive housing provides **permanent rental homes** with support services



Closing the Temporary Shelter Program at 65 Dundas St. E.

As part of the City's response to the COVID-19 pandemic and the need for physical distancing in the shelter system, the building was leased by the City for use as a temporary shelter program.

Starting in September, the shelter program will begin a phased closure while renovations take place.

All clients will receive support to move to another shelter or into housing before the closure of the temporary shelter program, expected by the end of 2023.

Moving forward at 65 Dundas St. E.



Dates in the timeline are approximate and subject to change.

Thank you

Community Liaison:

Phone: **437-684-5857.**

(Monday to Friday 9 a.m. to 4 p.m.).

Email:

communityliaison@bigideaspace.ca

For more information on these new homes, please visit:

www.Toronto.ca/65Dundas