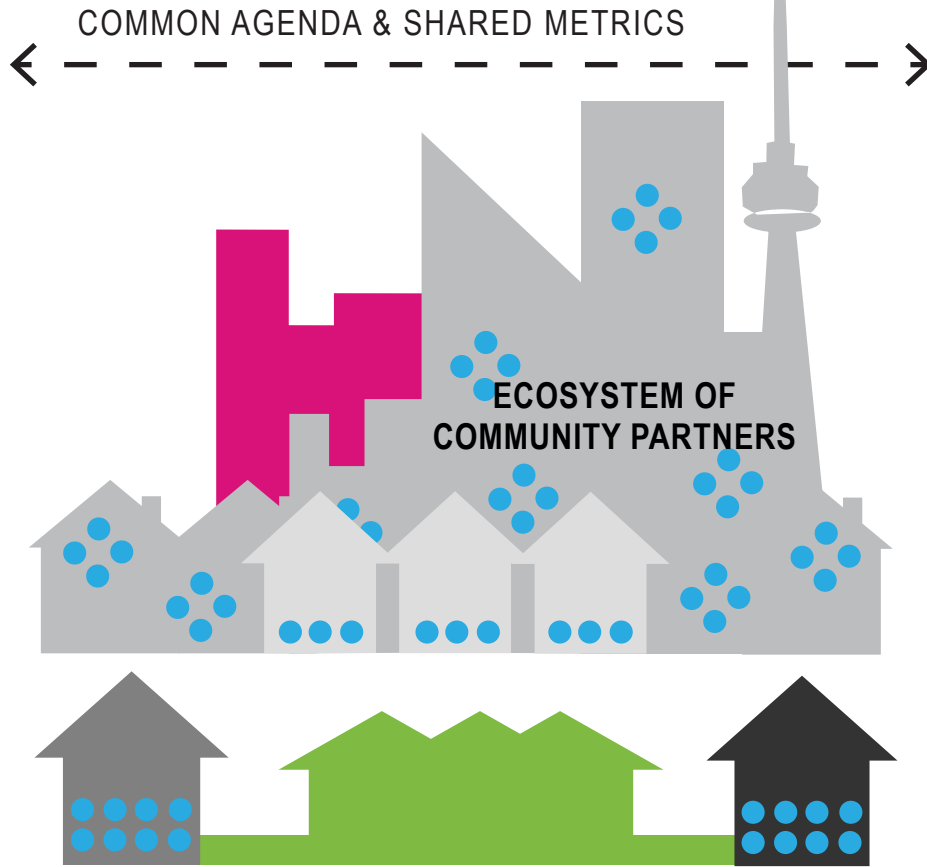




# GOVERNANCE MODEL



## COMMUNITY PARTNER & INDIVIDUAL SUPPORTER

These are the foundation of the TAEH. They are organizations and individuals that make up the eco-system of TAEH's collective impact initiative to end homelessness in Toronto.

## WORKING GROUPS

These are essential to the TAEH Theory of Change and take on strategic priorities and challenges of the TAEH.

## THE STEERING COMMITTEE

Focuses and guides the TAEH.

## PWLE

People with lived experience are an essential part of the work to end homelessness. We work with and strive to learn from people with lived experience on a continuous basis.

## THE CHAMPIONS TABLE

To start in 2018, will promote and champion the TAEH across Toronto's diverse communities.

## THE SECRETARIAT

Supports all roles in the TAEH governance structure. Together with the Steering Committee and the Champions' table it makes up the backbone team of the TAEH.

## TORONTO HOUSING AND HOMELESSNESS SERVICE PLANNING FORUM

This is co-chaired by the Shelter, Support and Housing Administration (SSHA) of the City of Toronto and the TAEH. It meets quarterly as a collaborative forum and is open to everyone, not just TAEH partners and supporters.